

Report of Test Results

Assignment No:
M 0446 / 2014
Page 1 / 8

Client
Nevoga GmbH
Znaimerstraße 4
83395 Freilassing

Assignment of : 17 November 2014
Test objects : Underlay mountings plates
Assignment : To determine deformation under load/
pressure load
Test performed on : 18 November 2014
Test performed by : Kiwa GmbH, Munich branch
Test period : November 2014

Garching, 30 May 2014
ma/mz

pp.
Dipl.-Ing. (FH) Andreas
Matzner
- Head of concrete and engineering construction -

pp.
Peter Maier
- Project handler -

This test report comprises 8 pages.
The test results relate to the sample material that was presented for testing. The test material was used up.
Duplication and publication of the test report in excerpts is only permitted with our written authorisation.
Opinions and interpretations of the test centre are indicated pursuant to DIN EN ISO/IEC 17 025 point 5.10.5 by
the use of *italics*.

Contents

1	General	3
2	Test procedure	4
3	Test results	5
3.1	Pressure load test	5
4	Remarks	6

Annex:

- Photographs

1 General

Kiwa GmbH was instructed by Nevoga GmbH, represented by Mr Ostermeier, to determine the stress capacity/deformation under load of underlay mounting plates.

Mounting plates were supplied by Mr Ostermeier on 17 November 2014 for this purpose. The plates supplied were as follows:

- 5x UP 02 A solid plate
- 5x UP 05 A solid plate
- 5x UP 10 A solid plate
- 5x UP 10 NA lightweight plate
- 5x UP 15 A solid plate
- 5x UP 15 NA lightweight plate
- 5x UP 20 A solid plate
- 5x UP 20 NA lightweight plate

All samples were taken and all tests performed by personnel and with apparatus from our laboratory in Garching.

2 Test procedure

The following mounting plates were selected for the test:

3x UP 15 NA lightweight plate

3x UP 20 A solid plate

3x UP 20 NA lightweight plate

The mounting plates were photographed against a measurement scale prior to testing and checked for flatness.

The plates were then subjected to loads of 20 KN = 2t and 50 KN = 5t in the test press and their deformation subsequently inspected.

At the end of the test sequence, a load was applied to the plates until they reached deformation, and the deformation recorded.

3 Test results
3.1 Pressure load test

Plate	UP 20 NA Lightweight		
No.	1	2	3
Dimensions	69 x 69 x 20	69 x 69 x 20	69 x 69 x 20
At 20 KN pressure	69 x 69 x 20	69 x 69 x 20	69 x 69 x 20
At 50 KN pressure	69 x 69 x 20	69 x 69 x 20	69 x 69 x 20
At maximum load of 247 KN	72 x 72 x 18	-	-

Plate	UP 20 A Solid		
No.	1	2	3
Dimensions	69 x 69 x 20	69 x 69 x 20	69 x 69 x 20
At 20 KN pressure	69 x 69 x 20	69 x 69 x 20	69 x 69 x 20
At 50 KN pressure	69 x 69 x 20	69 x 69 x 20	69 x 69 x 20
At maximum load of 201 KN	69 x 69 x 20	-	-

Plate	UP 15 NA Lightweight		
No.	1	2	3
Dimensions	69.5 x 69.5 x 15	69.5 x 69.5 x 15	69.5 x 69.5 x 15
At 20 KN pressure	69.5 x 69.5 x 15	69.5 x 69.5 x 15	69.5 x 69.5 x 15
At 50 KN pressure	69.5 x 69.5 x 15	69.5 x 69.5 x 15	69.5 x 69.5 x 15
At maximum load of 174 KN	70 x 70 x 14.5	-	-

4. Remarks

The mounting plates of various thicknesses display no deformation at a pressure load of 50 KN.

Garching, 18. November 2014

Kiwa GmbH

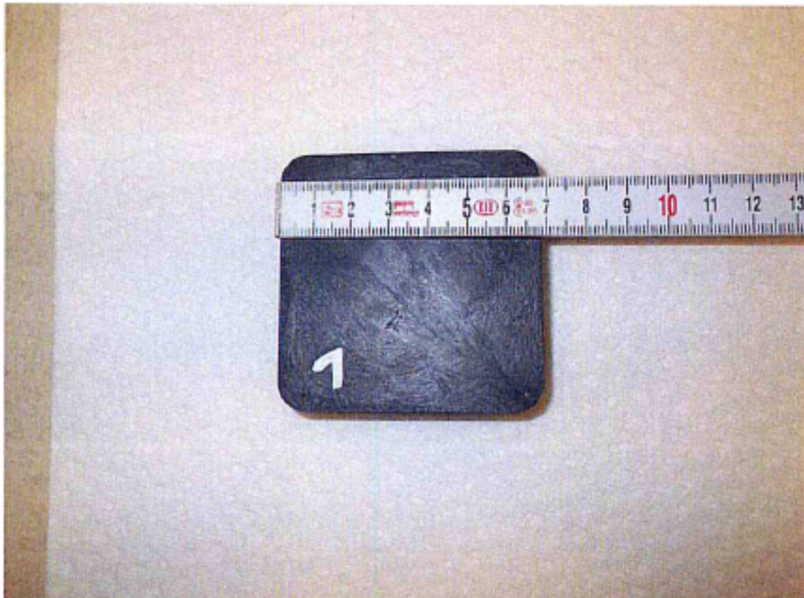


Fig. 1: Mounting plate UP 20 NA lightweight before load test.



Fig. 2: Mounting plate UP 20 NA lightweight after maximum stress, with distinctly discernible deformation in the plate on the right.



Fig. 3: Mounting plate UP 15 NA lightweight before load test.



Fig. 4: Mounting plate UP 15 NA lightweight after maximum stress, with slight discernible deformation.